

POINT WEST CORPORATE CENTER

1610 ARDEN WAY, SACRAMENTO, CA



GREAT CENTRAL LOCATION
WITH BEST-IN-CLASS AMENITIES

PROMINENT BUILDING SIGNAGE AVAILABLE

Exclusively Marketed By: _____

NEWMARK



pointwestportfolio.com

Jack Blackmon

916.494.2349

jack.blackmon@nmrk.com

CA RE License #01999561

Lucas Lugo

916.569.2322

lucas.lugo@nmrk.com

CA RE License #01916673

Jodie Robinson

916.569.2318

jodie.robinson@nmrk.com

CA RE License #02214357

POINT WEST CORPORATE CENTER

1610 ARDEN WAY
SACRAMENTO, CA

PROPERTY HIGHLIGHTS



Classic brick architecture with expansive windowline and courtyard views



Professional Property Management and facilities engineer



Onsite fitness center with showers



Beautiful courtyard with shaded outdoor seating and outdoor water feature



Located within minutes of Sacramento's CBD



Onsite Cafe. Restaurants and retail services immediately adjacent to the property & short walk to Arden mall



Immediate freeway access to Business Hwy 80



Onsite security patrol



Onsite training & conference room

CONCIERGE SERVICES



Basin Street Properties is proud to announce our newest tenant amenity – Concierge Services. Tenants have access to family entertainment, travel arrangements, and a host of other business services.



Personal Services

- Housekeeping / sitting
- Pet sitting / grooming
- Auto detailing / maintenance
- Dry cleaning / laundry
- Fitness trainer / massage services
- Customized personal shopping



Entertainment Services

- Tickets for concerts, theater and sporting events
- Restaurant reservations
- Visiting client and guest arrangements



Event and Meeting Services

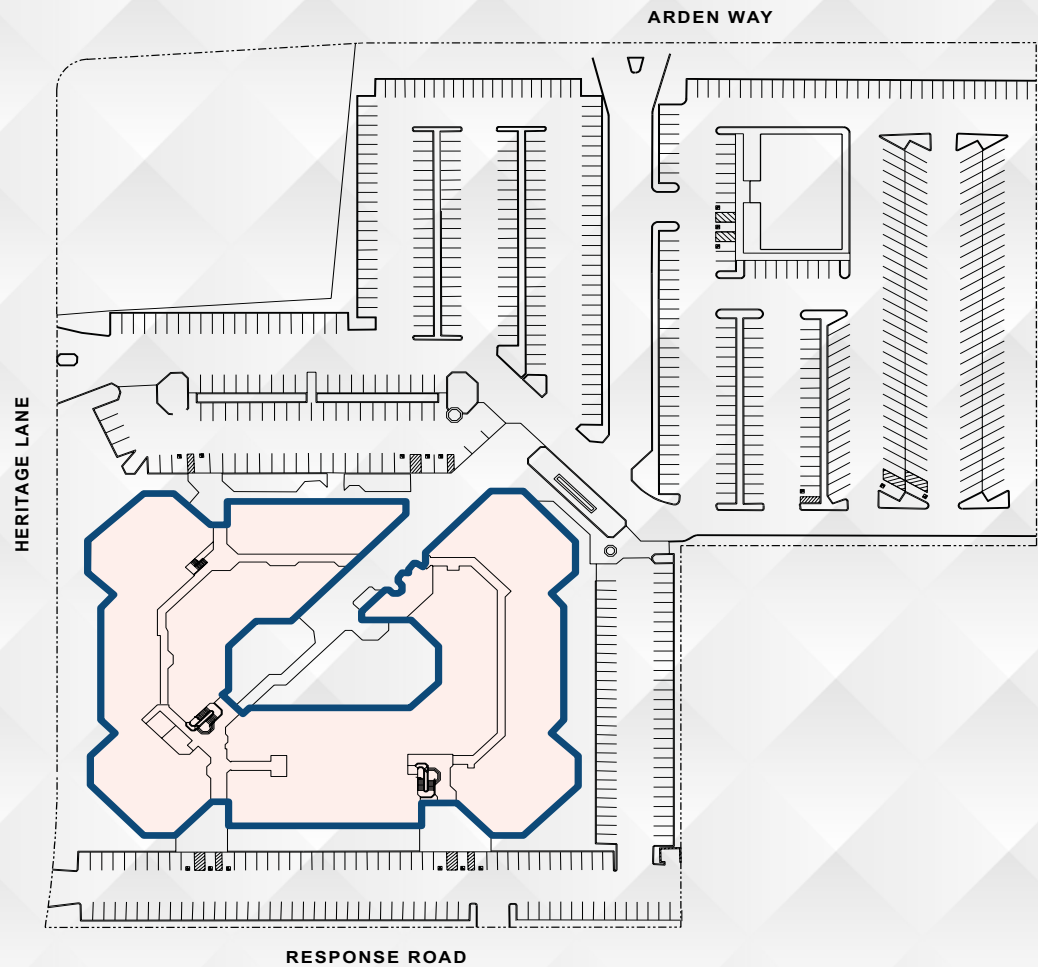
- Site selection
- Catering, food and beverage arrangements
- Multi-media / A.V. arrangements



**POINT WEST
CORPORATE CENTER**
1610 ARDEN WAY
SACRAMENTO, CA



SITE PLAN



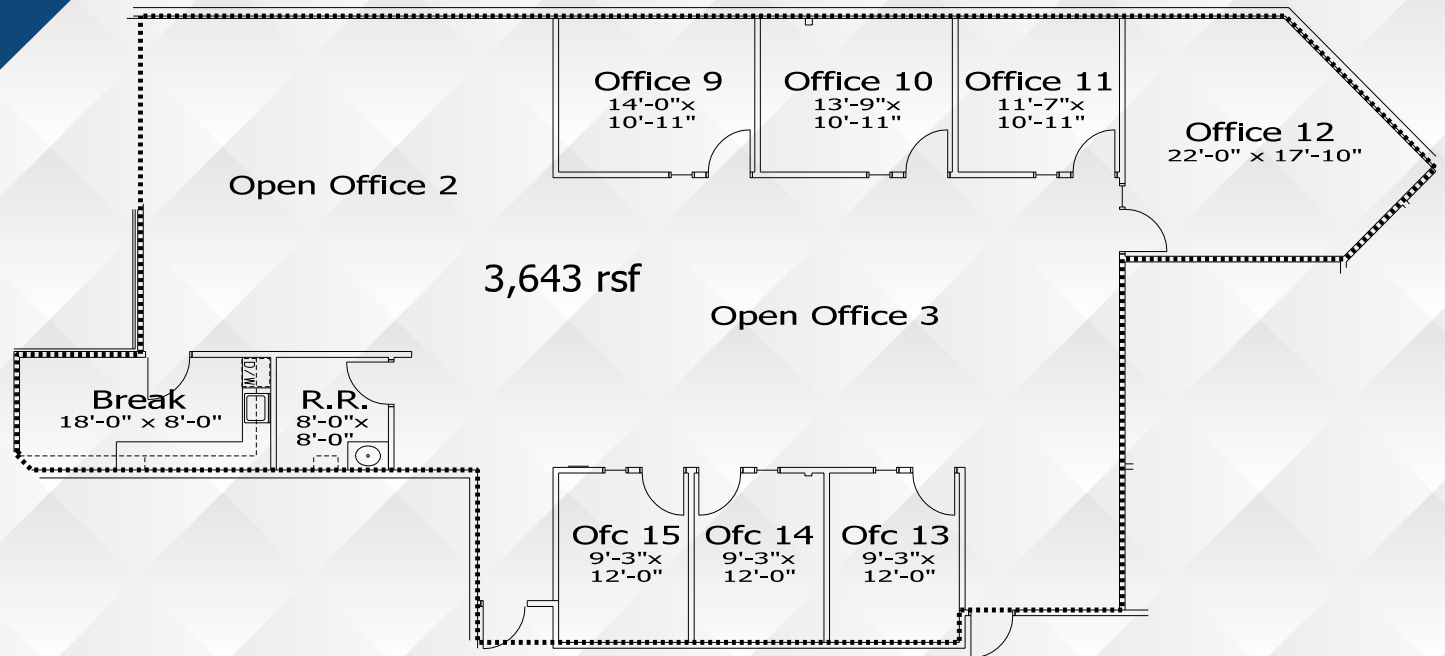
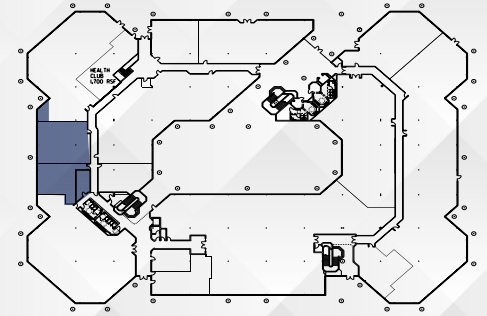
POINT WEST CORPORATE CENTER

1610 ARDEN WAY
SACRAMENTO, CA

AMENITIES MAP

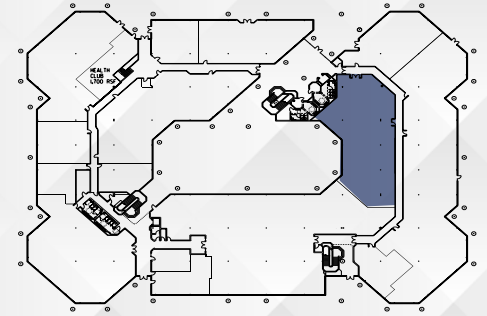
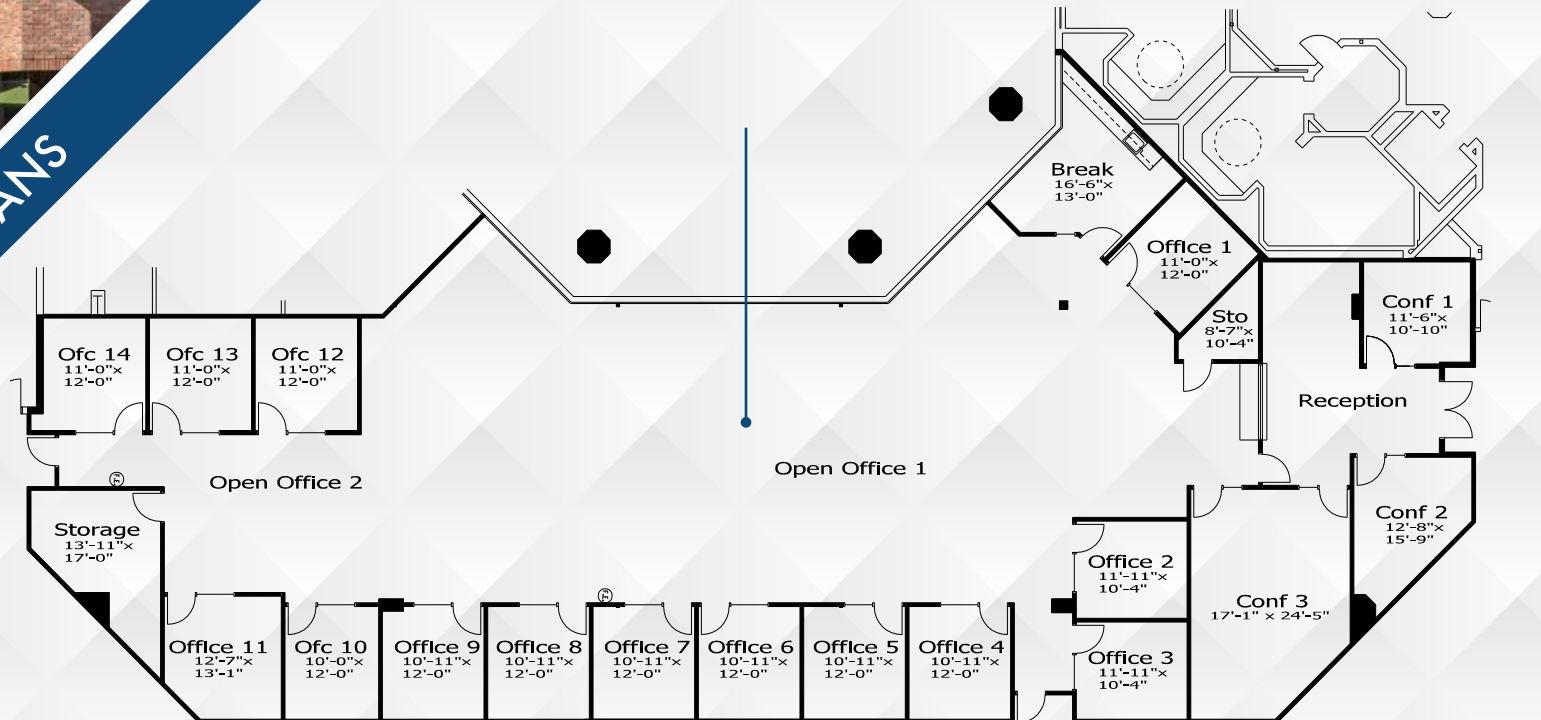


FLOOR PLANS



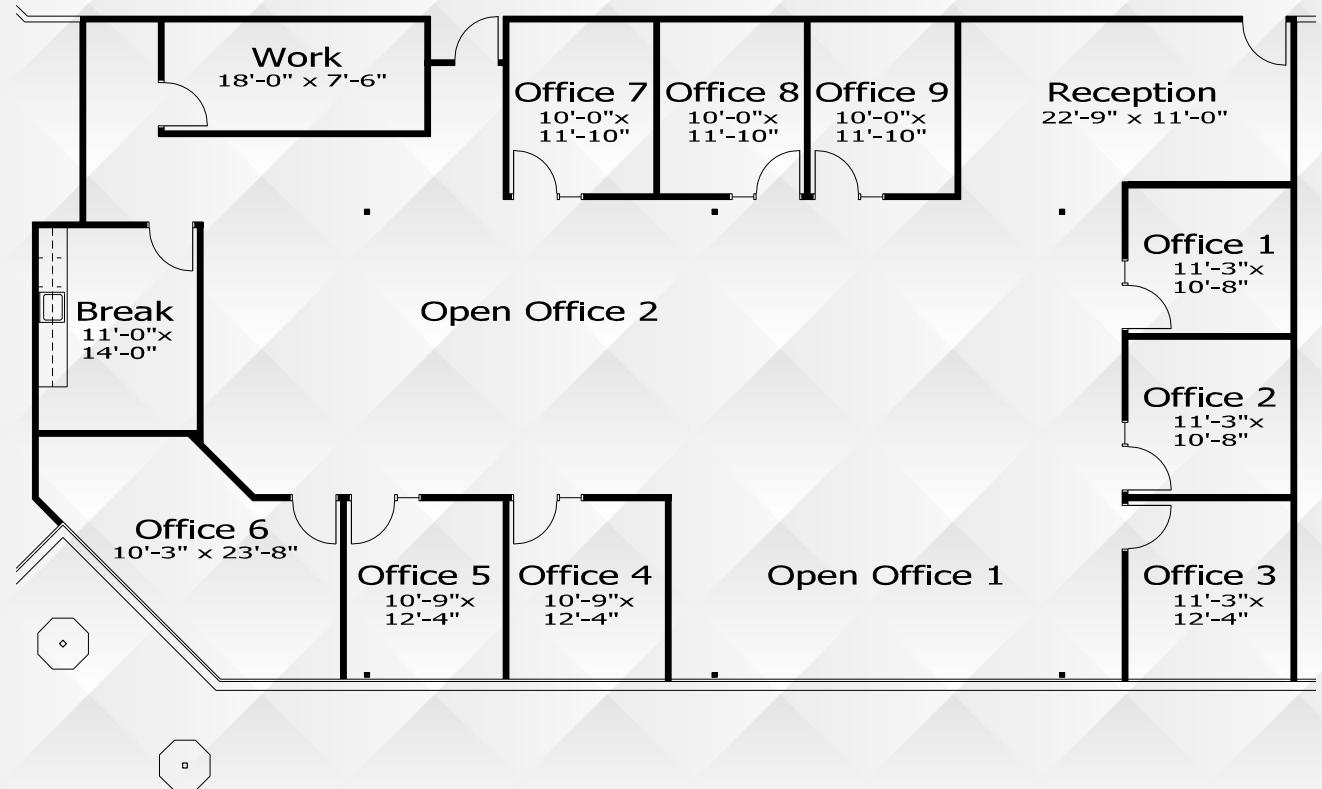
FIRST FLOOR | 3,643 RSF | SUITE 150

FLOOR PLANS



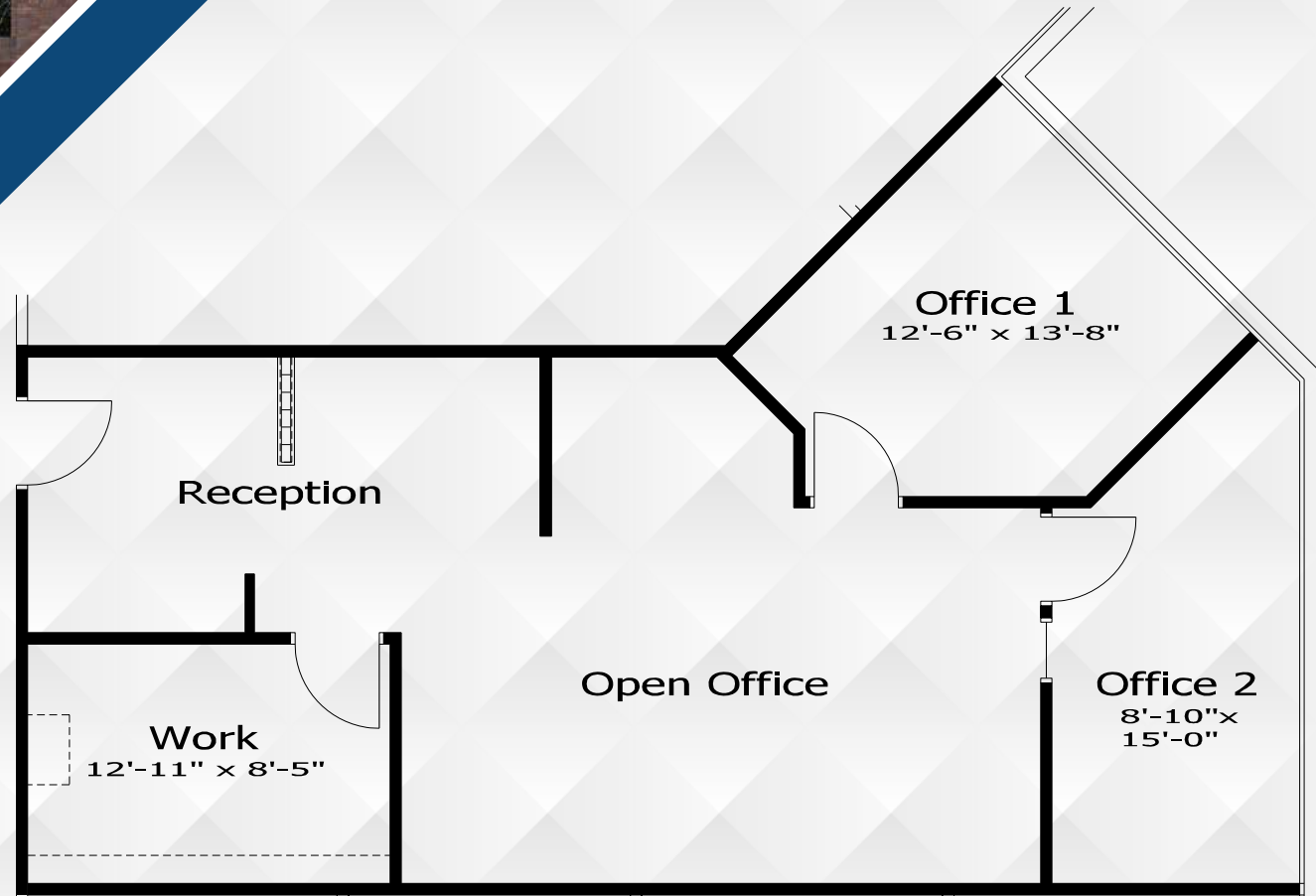
FIRST FLOOR | 8,116 RSF | SUITE 190

FLOOR PLANS



SECOND FLOOR | 4,369 RSF | SUITE 277

FLOOR PLANS



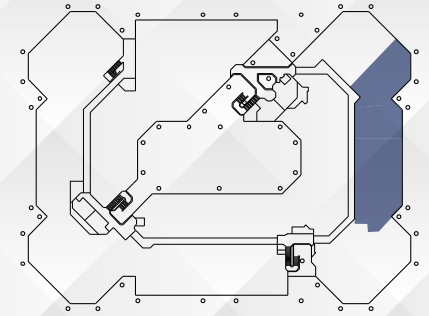
SECOND FLOOR | 1,105 RSF | SUITE 287

FLOOR PLANS



SECOND FLOOR | 3,492 RSF | SUITE 295

FLOOR PLANS



SECOND FLOOR | 8,966 RSF | SUITE 277 | SUITE 287 | SUITE 295

POINT WEST CORPORATE CENTER

1610 ARDEN WAY, SACRAMENTO, CA



DISCLAIMER: The distributor of this communication is performing acts for which a real estate license is required. The information contained herein has been obtained from sources deemed reliable but has not been verified and no guarantee, warranty or representation, either express or implied, is made with respect to such information. Terms of sale or lease and availability are subject to change or withdrawal without notice.

NEWMARK



pointwestportfolio.com

Jack Blackmon
916.494.2349
jack.blackmon@nmrk.com
CA RE License #01999561

Lucas Lugo
916.569.2322
lucas.lugo@nmrk.com
CA RE License #01916673

Jodie Robinson
916.569.2318
jodie.robinson@nmrk.com
CA RE License #02214357

Exclusively Marketed By: _____